



## Aura In-line Fan With Kit

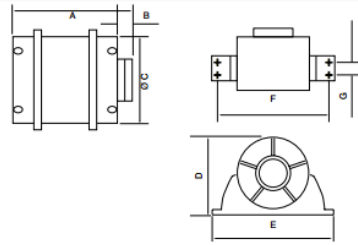
230V Fan Range Installation and Operating Guide



AURA100B Fan With Kit	9041420
AURA100B Fan With Kit & LED	9041422
AURA100T Fan With Kit	9041419
AURA100T Fan With Kit & LED	9041421



### Fan dimensions



Model	A	B	C	D	E	F	G
Aura in-line 100	85	28	100	110	160	144	29

### Model range

**AURA100B** is a basic extract or supply fan operated by a remote switch.  
**AURA100T** extract or supply fan operated by a remote switch with a timer function adjustable from 2 to 30 minutes.

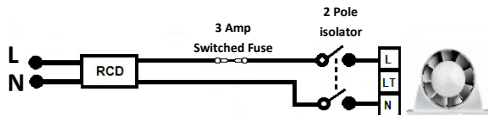
### Range specification

Model	Max Air Flow m <sup>3</sup> /hr	Nominal Power (watts)	Noise Level dB(A)
AURA100B	108	16	39
AURA100T	108	16	39

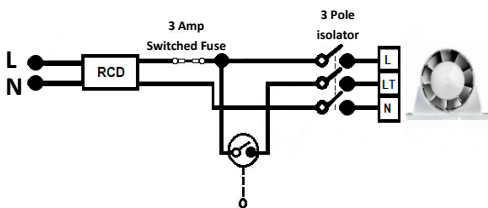
Page 2 of 8

### Electrical installation

#### AURA 100B Fan Wiring



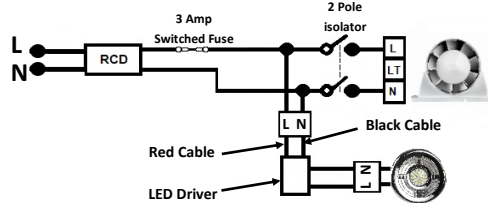
#### AURA 100T Fan Wiring



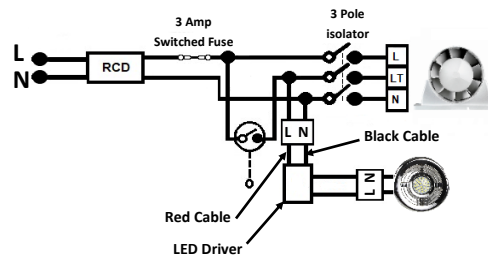
Page 5 of 8

### Electrical installation

#### AURA 100B Fan With LED Wiring



#### AURA 100T Fan With LED Wiring

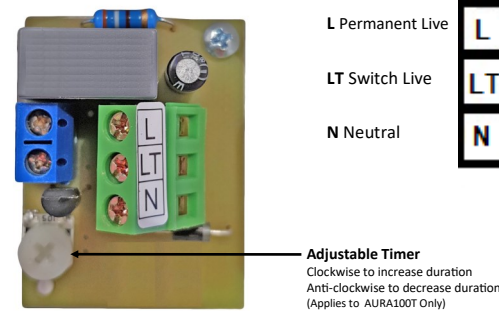


Page 6 of 8

### Range overview

Designed for ventilation of small and medium size rooms  
 Can be used for supply or extract  
 Powerful ventilation up to 108m<sup>3</sup>/hr  
 Compact and quiet in operation  
 Supplied with fixing bracket  
 IPX4 rating and double insulated  
 Complies with Building Regulations  
 Ductable up to 3m  
 3 year warranty (subject to conditions—See page 7).

### AURA100T Terminal Guide



Page 3 of 8

### Maintenance

**SAFETY FIRST: ALWAYS ISOLATE THE FAN UNIT AND LIGHT FROM THE POWER SUPPLY BEFORE REMOVING THE COVER.**  
 When installed according to these instructions the Aura in-line range is completely safe. The materials used do not constitute a hazard.

### Cleaning

The external housing of the fan can be wiped with a damp cloth. Do not use household cleaners containing abrasives. **Note:** Always isolate the fan when cleaning. Never clean any parts of the fan assembly by immersing in water or using a dishwasher.

### Warning

This appliance can be used by children aged from 8 years and above and persons with reduced physical, sensory or mental capabilities or lack of experience and knowledge if they have been given supervision or instruction concerning use of the appliance in a safe way and understand the hazards involved. Children should not be allowed to play with the appliance. Cleaning and user maintenance should not be carried out by children.

### Warranty

Applicable to units installed and used in the United Kingdom. Airflow Developments Ltd guarantees the Aura in-line for 3 YEARS from date of purchase against faulty material or workmanship. Warranty only covers the fan, not the reinstallation of this if required. In the event of any defective parts being found, Airflow Developments Ltd reserve the right to repair or at our discretion replace without charge provided that the unit:

Page 7 of 8

### Electrical installation

The Aura In-line fan range is IPX4 rated and is suitable for mounting in Zone 1 in bathrooms, toilets, kitchens, utility rooms and inside shower cubicles when installed with a 30mA RCD as long as it is not exposed to water jets. It can be installed above a fixed shower head.

The fan requires a 230V 50Hz single phase supply. Class II equipment. BS EN 60417. An external 3A fuse is required for each fan unit. Cable sizes (max): Fixed flat wiring 2 core 1mm<sup>2</sup>, 3 core 1/1.5mm<sup>2</sup>

All electrical installation to be carried out by an approved electrician in accordance with Part "P" U.K. Building Regulations and to the latest IEEE standards, or the appropriate regulations in the country of installation.

### Important

The Aura In-line range also complies with the requirements of the EU norms and directives. Do not place the fan unit near direct heat sources, e.g. radiant heaters, or where temperatures can exceed 40°C (104°F).

Precautions must be taken to avoid back flow of gases in rooms with open flue fuel burning appliances.

Page 4 of 8



### Warranty

- Has been installed and used in accordance with the fitting and wiring instructions supplied with each unit.
- Has not been connected to an unsuitable electrical supply.
- Has not been subjected to misuse, neglect or damage.
- Has not been modified or repaired by any person not authorised by Airflow Developments Ltd
- Has been installed in accordance with latest Building Regulations and IEEE wiring regulations by a recognised competent installer. Airflow Developments Ltd shall not be liable for any loss, injury or other consequential damage, in the event of a failure of the equipment or arising from, or in connection with, the equipment excepting only that nothing in this condition shall be construed as to exclude or restrict liability for negligence.



### Disposal

- Do not dispose of with household waste.
- Please recycle where facilities exist.
- Check with your local authority for recycling advice.



### UK Head-Office

AIRFLOW DEVELOPMENTS Limited  
 Aigle House, Lancaster Road  
 Cressle Business Park  
 High Wycombe  
 Buckinghamshire  
 HP12 3QP  
 United Kingdom  
 Tel: +44 (0) 1494 525252  
 Fax: +44 (0) 1494 461073  
 Email: info@airflow.com

### Czech Republic

AIRFLOW LUFTTECHNIK GmbH  
 Postfach 1208  
 Hostýnská 520  
 108 00 Praha 10  
 Malešice  
 Czech Republic  
 Tel: +42 (0) 2 7477 2230  
 Fax: +42 (0) 2 7477 2370  
 Email: info@airflow.cz  
 Web: airflow.cz

### Germany

AIRFLOW LUFTTECHNIK GmbH  
 Postfach 1208  
 D-53349 Rheinbach  
 Germany  
 Tel: +49 (0) 222 69205 0  
 Fax: +49 (0) 222 69205 11  
 Email: info@airflow.de  
 Web: airflow.de

AIRFLOW DEVELOPMENTS LTD reserve the right in the interest of continuous development to alter any or all specifications without prior notice.

Page 8 of 8